

# 客户图

## NOTES:

1. FINISH:
  - 1.1 HOUSING: PBT GREY,UL94V-0.
  - 1.2 CONTACT: C5191,GOLD (SEE P/N) PLATED IN CONTACT AREA, 80u" MIN MATTE TIN PLATED IN SOLDER AREA,50u" MIN. NICKEL UNDERPLATED OVERALL.
2. ELECTRICAL:
  - 2.1 VOLTAGE RATING:300V;
  - 2.2 CURRENT RATING:3A;
  - 2.3 DIELECTRIC WITHSTANDING VOLTAGE: 750V AC/MINUTE.
  - 2.4 CONTACT RESISTANCE: 20mΩ MAX.
  - 2.5 INSULATION RESISTANCE: 1000MΩ MIN.
  - 2.6 OPERATION TEMPERATURE:-40°C TO +105°C.
- 3.ORDER INFORMATION:

2.54x2.54mm 90° 折弯

AA R1 XXX XX 099 C

Pin数码: 006=2\*3PIN, ~, 100=2\*50PIN

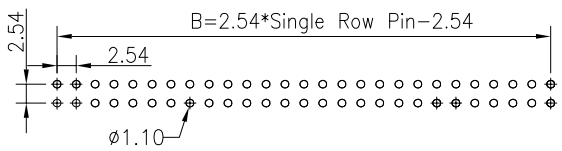
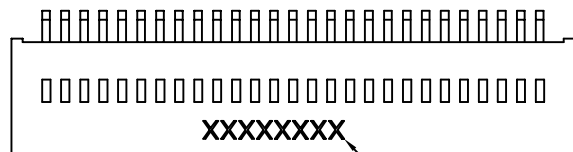
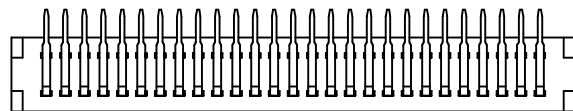
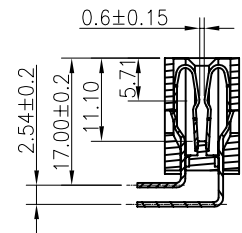
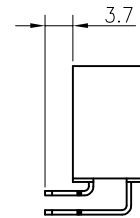
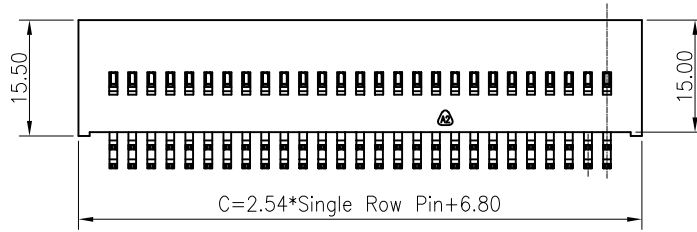
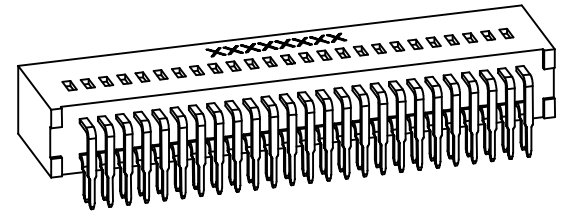
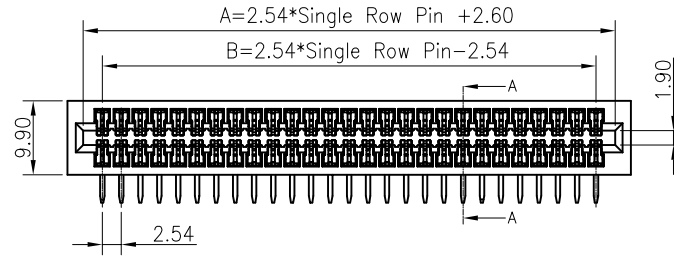
端子电镀: G0=Gold Flash, G1=1u" Gold, G2=3u" Gold, G3=5u" Gold, S0=Gold Flash/Tin, S1=1u" Gold/Tin, S2=3u" Gold/Tin, S3=5u" Gold/Tin, S4=10u" Gold/Tin, S5=15u" Gold/Tin, S6=30u" Gold/Tin

塑胶高度: 099=9.90mm

包装方式: C=TRAY

TABLE 1:

No. OF PIN	A	B	C
006=2x3PIN	10.22	5.08	14.42
008=2x4PIN	12.76	7.62	16.96
010=2x5PIN	15.30	10.16	19.50
012=2x6PIN	17.84	12.70	22.04
016=2x8PIN	22.92	17.78	27.12
032=2x16PIN	43.24	38.10	47.44
050=2x25PIN	66.10	60.96	70.30
.....			
100=2x50PIN	129.60	124.46	133.80



Recommended P.C.B Layout (Top Side)  
(PCB BOARD TOLFRANCF+0 05)

REV	DATE	MODIFICATION DESCRIPTION	CHANGE	APPROVE	DIM.	TOL	UNIT	mm	SCALE	1:1
A3	2024. 06. 10	主体增加D/C	WLY		OPERATION		DRAW	WLY	2021.05.13	
A2	2021. 05. 13	取消中间台阶	WLY		X.X	±0.40	DESIGN	Jensen	2021.05.13	
A1	2021. 04. 08	更正铜材型号	WLY		X.XX	±0.25	CHECK	Jack	2021.05.13	
AO		NEW			X.XXX	±0.15	APPROVE	Andy	2021.05.13	
					Angle	±3°				



SIZE	A4	PART NO.	AAR1XXXXX099C
SHEET	1/2	TITLE:	2.54x2.54mm 金手指 DIP 90°
PROJ.	⇄	DRAW NO.	378