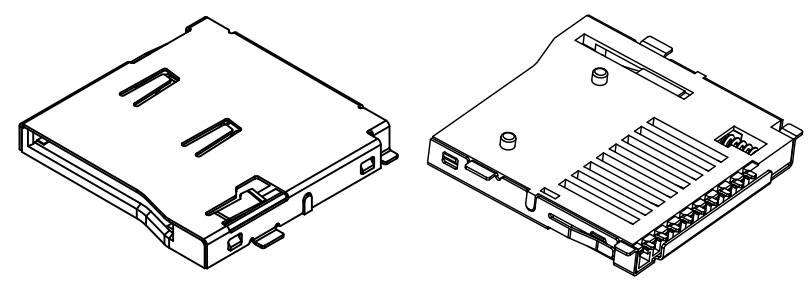
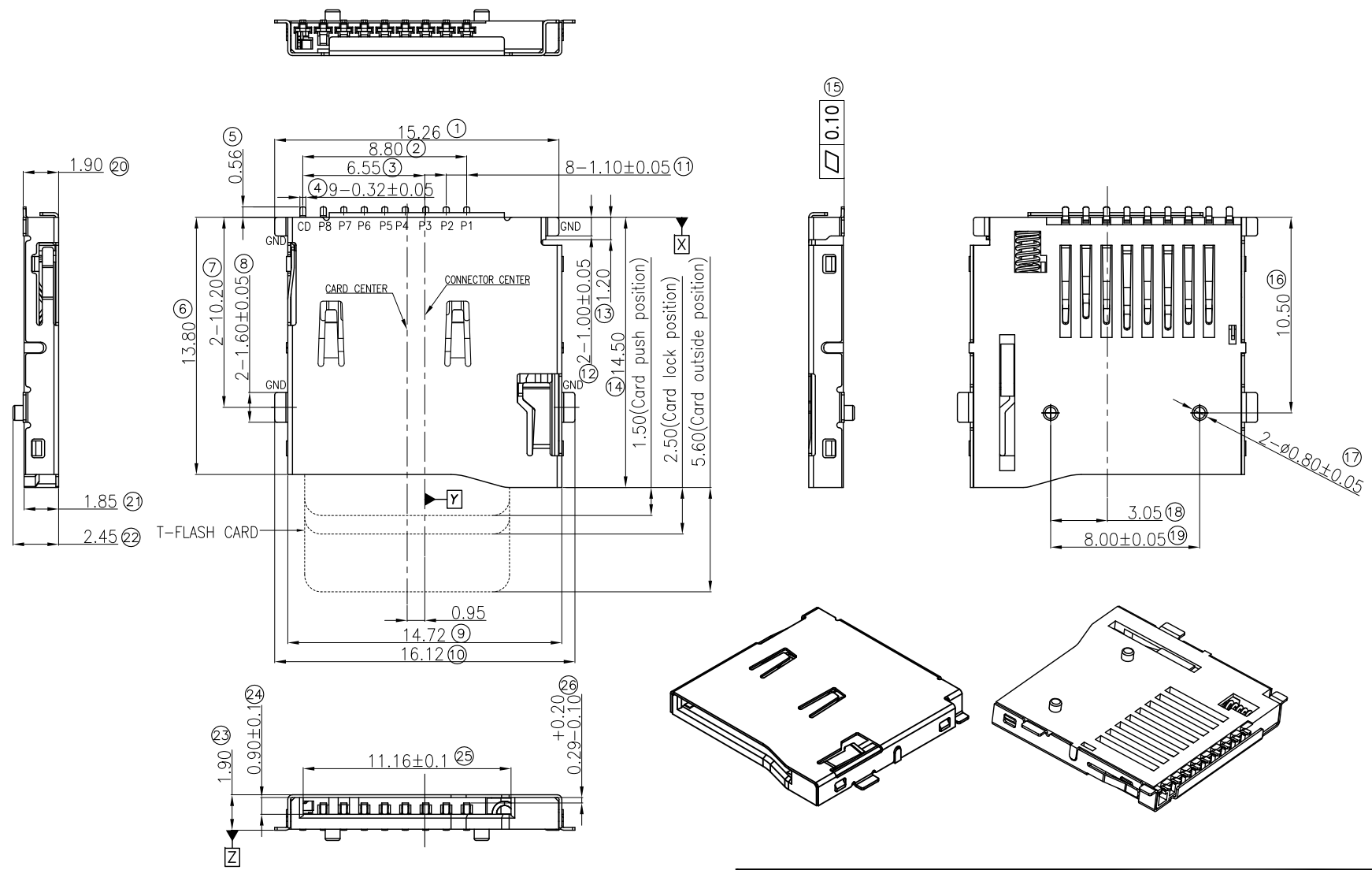


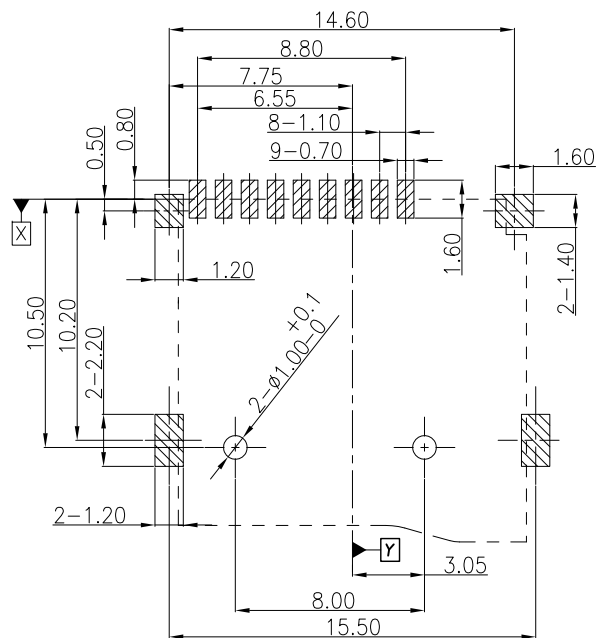
\* 所有原材料, 生产制程, 电镀必须符合HF要求



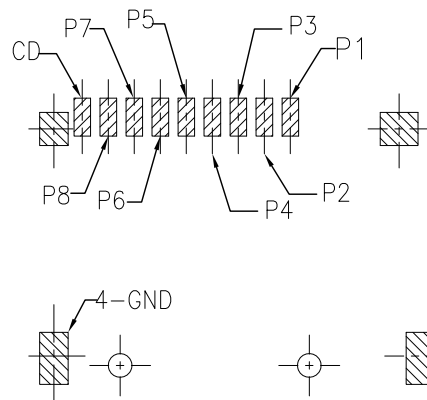
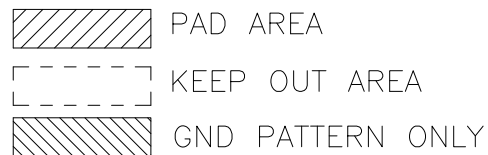
A	----	NEW RELEASE	Simon	2015.09.16
REVISION NO.	ECR NO.	DESCRIPTION	MARK	DATE
1		2	3	4

		PRODUCT NAME : TF1.85 卡座 (常规有弹片)		DRAWING: DATE: 2015-09-16	
		PRODUCT NO. : A50160000001		CHECK: DATE:	
DIMENSIONS INIT: mm UNLESS OTHERWISE SPECIFIABLE DIMENSION TOLERANCE X.X: ± 0.30 X.XX: ± 0.20 X.XXX: ± 0.05 ANGULAR: ± 2°		DRAWING NO. : D-TF185-T1230-01		APPROVED: DATE:	
		SCALE: 1:1		DWG ID: C D	

\* 所有原料材质, 生产制程, 电镀必须符合HF要求



RECOMMEND P.C.B LAYOUT  
(General tolerance  $\pm 0.05$ )



NOTE:

- Material:
  - 1-1 Housing: High Temperature Thermoplastic, (LCP MG350) Color Black UL 94V-0
  - 1-2 Contact: Copper Alloy (C5191-EH, T=0.15±0.03mm)
  - 1-3 Cover: Stainless Steel (SUS201-H T=0.15±0.03mm)
- Plating:
  - 2-1 Contact terminal:
    - Contact area: Gold 0.8u" Min.
    - Solder area: Sn overall 80u" Min.
    - Underplating: Ni overall 30u" Min.
  - 2-2 Cover: Plated 30u" Ni Overall
- Specification:
  - 3-1. Current Rating : 0.5A AC/DC max.
  - 3-2. Voltage Rating : 12V AC/DC
  - 3-3. Ambient Temperature Range : -25°C ~ +85°C
  - 3-4. Ambient Humidity Range : 95% R.H. Max.
  - 3-5. Contact Resistance: 100mΩ max.
  - 3-6. Insulation Resistance: 1000MΩ min./500VDC
  - 3-7. Durability: 10,000 cycles
- Product Compliant to RoHS Directive 2002/95/EC and ELV 2000/53/EC
- Part Must Comply Taisol HF WD-3-I-091 Specification.
- Recommending A Metal More Than 0.15mm Thick.  
Please Confirm Solderability, If Use A Metal Mask Less Than 0.15mm Thick.

PIN NO.	PIN ASSIGNMENT
P1	DAT2
P2	CD/DAT3 <sup>2</sup>
P3	CMD
P4	VDD
P5	CLK
P6	VSS
P7	DAT0
P8	DAT1
CD	CARD DETECTION
GND	GROUND



DIMENSIONS INIT: mm UNLESS OTHERWISE SPECIFIABLE DIMENSION TOLERANCE X.X: ± 0.30 X.XX: ± 0.20 X.XXX: ± 0.05 ANGULAR: ± 2°	PRODUCT NAME : TF1.85 卡座 (常规有弹片)	DRAWING:	DATE: 2015-09-16
	PRODUCT NO. : A501600000001	CHECK:	DATE:
	DRAWING NO. : D-TF185-T1230-01	APPROVED:	DATE:
			SCALE: 1:1
		REV.: A	PAGE: 2 OF 2

A	----	NEW RELEASE	ping	2015.09.16
REVISION NO.	ECR NO.	DESCRIPTION	MARK	DATE
1		2	3	4